



peppermint
robotics

A Qualcomm & SINE IIT Bombay powered company



1 & 2 Tons

Material Handling Robots

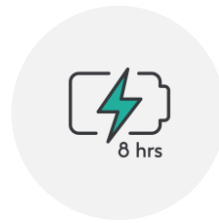


Analytics &
Reporting
Dashboard



AUTONOMOUS OPERATIONS

increasing productivity



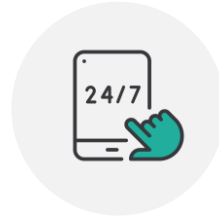
8 HOURS OF OPERATIONS

Highest in class



ANALYTICS & REPORTING

Telematics for preventive maintenance & remote diagnosis



24X7 SUPPORT & USAGE

Multi-lingual touch-screen interface & round the clock maintenance

Features	Tug 1000	Tug 2000
Type	Tug & Tow	Tug & Tow
Type of Operation	Robotic	Robotic
Towing Capacity* (in kg)	1000	2000
Turning Radius (mm)	710	830
Dry Weight (kg)	310	450
Tyres	NBR	NBR
Dimensions (L x W x H) (mm)	899 x 710 x 1223	1063 x 940 x 1354
Ground Clearance (mm)	70	60
Gradient Performance (max %)	5	5
Brake	Electronic	Electronic
Battery Voltage, nominal capacity (V/Ah)	24 / 210	24 / 210
Charger (Single Phase) (Automatic) (V/Amp)	24 /20	24 /20

* Towing capacity includes trolley weight plus payload weight



A Qualcomm & SINE IIT Bombay powered company



HQ & Engineering Centre
Last Building, S.No. 30/4, Intelux Lane,
Near Sree Control Chowk, Dhayari
Pune, India, 411041

info@getpeppermint.co

+91 93809 61201

www.getpeppermint.co

